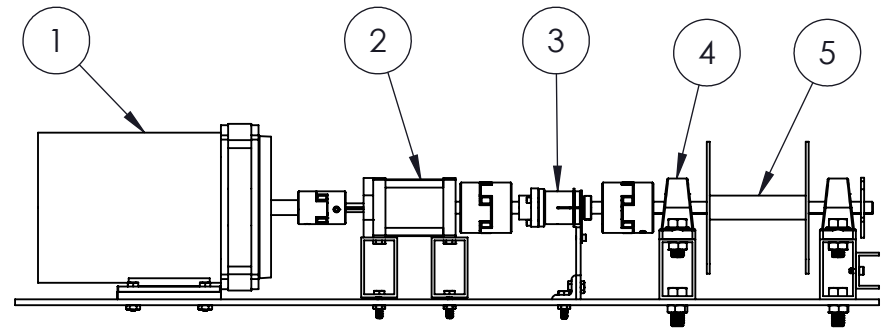


| ITEM NO. | PART NUMBER | PART NAME | SOURCE |
|----------|--------------|----------------------------|-----------------------|
| 1 | MD0502F | DC Motor | Hallmark Industries |
| 2 | P80S-333-14 | P80 27:1 Gearbox | Banebots |
| 3 | AD100A | Autodisconnect Clutch | Tiny Clutch |
| 4 | UCP201-08 | 1/2" Pillow Block Bearings | The Big Bearing Store |
| 5 | Custom Built | Spool | McMaster (Components) |



DRAWN BY Daniel McGinn

COURSE ME 93: Design for Emerging Markets

SECTION 01

Ref Designation C2



School of Engineering

SHEET 1 OF 2

APPROVED N. Wright

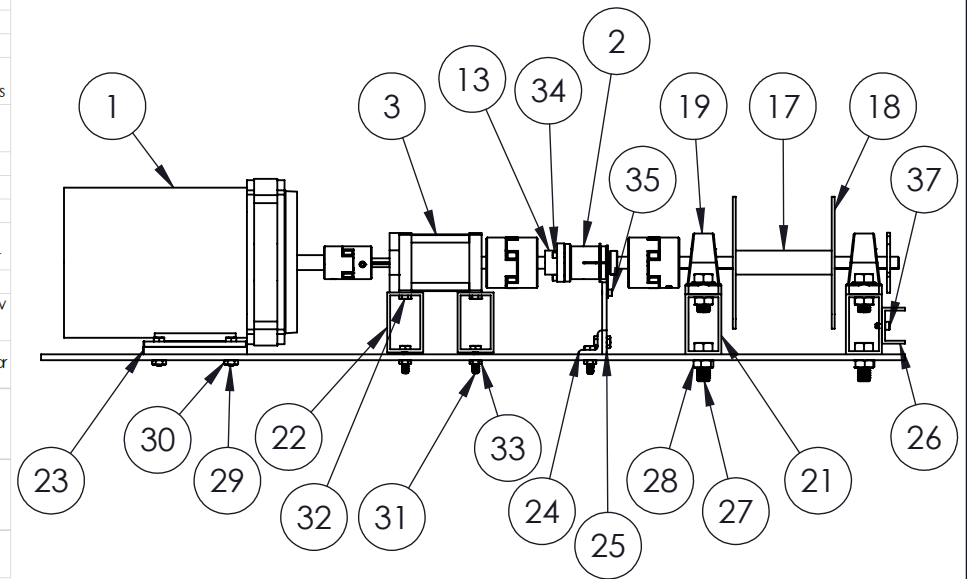
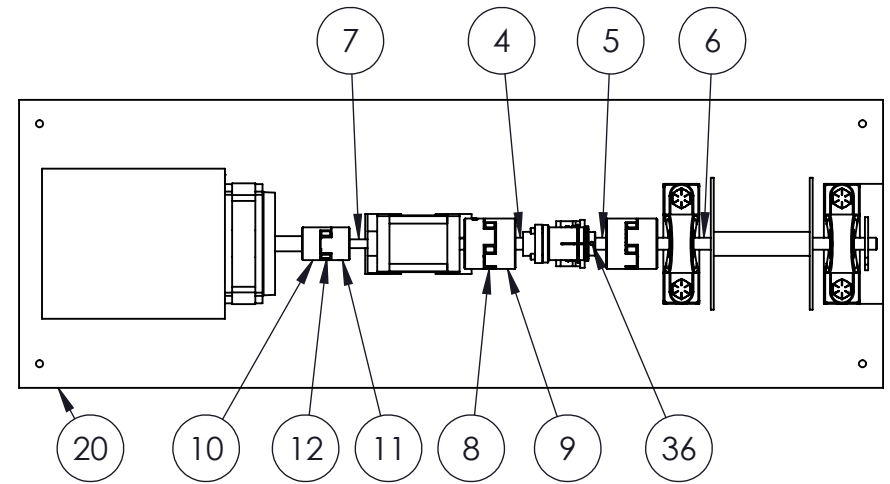
TITLE Base Plate Assembly

ModRooster: Automated Fatigue Testing Machine

DATE 5/4/18

SCALE 1:8

| ITEM NUMBER | PART NAME | SUPPLIER | PART NUMBER | QUANTITY | PRICE PER | TOTAL PRICE | DESCRIPTION |
|---------------------|---|-----------------------|-----------------------------|----------|-----------|-------------|-------------------|
| Actuals | | | | | | | |
| 001 | Hallmark Industries DC Motor | Amazon | MDD802F | 1 | \$169.79 | \$169.79 | |
| 002 | Tiny Clutch AD Series Autodisconnect Clutch Gears | Helander Products | AD100A | 1 | \$283.26 | \$283.26 | |
| 003 | P80 Gearbox Standard Configuration, 27:1 Shafts | Bonebots | P80S-333-14 | 1 | \$130.25 | \$130.25 | |
| 004 | Keyed Rotary Shaft, 1/2" Diameter, 2" Length | | | | | | |
| 005 | Keyed Rotary Shaft, 1/2" Diameter, 1.5" Length | McMaster-Carr | 1497K31 | 1 | \$29.37 | \$29.37 | |
| 006 | Keyed Rotary Shaft, 1/2" Diameter, 10" Length | | | | | | |
| 007 | Keyed Rotary Shaft, 3/8" and 8mm Diameter, 2.5" Length | McMaster-Carr | 1497K4 | 1 | \$6.25 | \$6.25 | |
| Shaft Couplings | | | | | | | |
| 008 | Polyurethane Spider for 27/64" CD Flexible Shaft Coupling | McMaster-Carr | 2410K13 | 2 | \$13.56 | \$27.12 | |
| 009 | 1/2" Flexible Shaft Coupling Iron Hub | McMaster-Carr | 6408K14 | 4 | \$5.89 | \$23.56 | |
| 010 | 5/8" Flexible Shaft Coupling Iron Hub | McMaster-Carr | 6408K12 | 1 | \$6.00 | \$6.00 | |
| 011 | 3/8" Flexible Shaft Coupling Iron Hub | McMaster-Carr | 6408K12 | 1 | \$6.00 | \$6.00 | |
| 012 | Buna-N Rubber Spider for 1-23/64" CD Flexible Shaft Coupling | McMaster-Carr | 6408K73 | 1 | \$3.58 | \$3.58 | |
| 013 | Rigid 1/2" 3 Hole Flange Mount | - | - | 1 | - | - | |
| Shaft Keys | | | | | | | |
| 014 | 1/8" x 1/8" Steel Machine Key Stock | McMaster-Carr | 98491A100 | 1 | \$1.09 | \$1.09 | For 1/2" Shaft |
| 015 | 3/16" x 3/16" Steel Machine Key Stock | McMaster-Carr | 98510A117 | 1 | \$0.96 | \$0.96 | For 5/8" Shaft |
| 016 | 2mm x 2mm Steel Machine Key Stock | McMaster-Carr | 92289A710 | 1 | \$1.87 | \$1.87 | For 8mm Shaft |
| Spool | | | | | | | |
| 017 | 1" CD, .095" Wall Thickness Steel Round Tube, 4" length | McMaster-Carr | 9922K24 | 1 | \$25.87 | \$25.87 | |
| 018 | 5" x 5" Steel Disc, 1/4" Thickness | McMaster-Carr | 6544K22* | 2 | \$19.81 | - | |
| Bearings | | | | | | | |
| 019 | 1/2" Pillow Block Bearing | The Big Bearing Store | UCP201-08 | 2 | \$6.90 | \$13.80 | |
| Mounting Components | | | | | | | |
| 020 | 12" x 36" Aluminum Mounting Plate, 1/4" Thickness | | | 1 | \$30.00 | \$30.00 | |
| 021 | 1-1/2" x 2-1/2" Aluminum Rectangular Tube, 1/8" Wall Thickness, 5" Length | McMaster-Carr | 6546K59 | 1 | \$26.04 | \$26.04 | Bearing Spacers |
| 022 | 1-1/2" x 2-1/2" Aluminum Rectangular Tube, 1/8" Wall Thickness, 2.5" Length | | | | | | Spacers |
| 023 | 0.31" Motor Mount | - | - | 2 | - | - | |
| 024 | 10 Series 4 Hole - Wide Inside Corner Bracket | 80/20 Inc. | 4113* | 1 | \$4.05 | - | |
| 025 | Aluminum T Plate | - | - | 1 | - | - | |
| 026 | 1-1/2" x 2-1/2" Aluminum Rectangular Tube, 1/8" Wall Thickness, 3" Length | Shop Supply | - | 1 | - | - | Encoder Mount |
| Fasteners | | | | | | | |
| 027 | 1/2"-13 x 1-1/4" Hex Bolt | Home Depot | 96968 | 8 | \$0.60 | \$4.80 | Fastening Pillow |
| 028 | 1/2"-13 Galvanized Hex Nut | Home Depot | 804076 | 8 | \$0.38 | \$3.04 | Block Bearings |
| 029 | 5/16"-18 x 1" Hex Bolt | Shop Supply | - | 4 | - | - | Fastening Motor |
| 030 | 5/16"-18 Hex Nut | Shop Supply | - | 4 | - | - | |
| 031 | 1/4"-20 x 1" Hex Bolt | Shop Supply | - | 6 | - | - | Fastening |
| 032 | 1/4"-20 x 1/2" Hex Bolt | Shop Supply | - | 6 | - | - | Gearbox & Clutch |
| 033 | 1/4"-20 Hex Nut | Shop Supply | - | 8 | - | - | |
| 034 | 8-32 1/4" Socket Head Screw | Shop Supply | - | 1 | - | - | Fastening |
| 035 | 10-24 1/2" Socket Head Screw | Shop Supply | - | 3 | - | - | Clutch |
| 036 | Aluminium Pin 0.95" Diameter, 1.25" Length | Shop Supply | - | 1 | - | - | |
| 037 | M5x10 Socket Head Cap Screw | Shop Supply | - | 2 | - | - | Fastening Encoder |



DRAWN BY Daniel McGinn

COURSE ME 93: Design for Emerging Markets

SECTION 01

Ref Designation C2

Tufts
UNIVERSITY

School of
Engineering

SHEET 2 OF 2

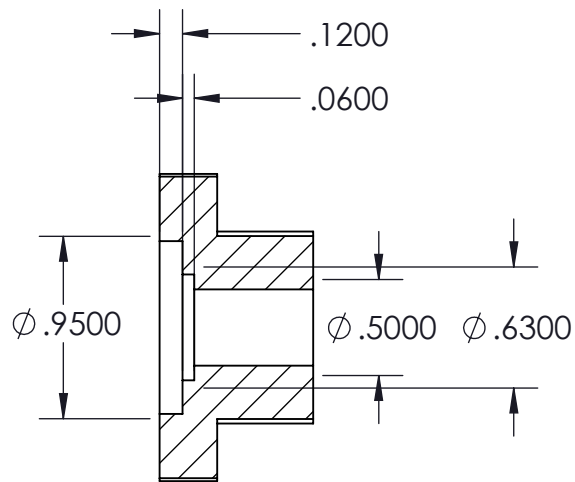
APPROVED N. Wright

TITLE Base Plate Assembly

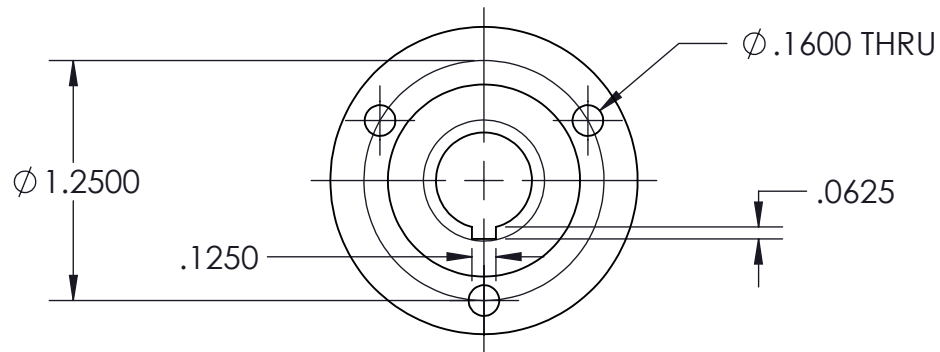
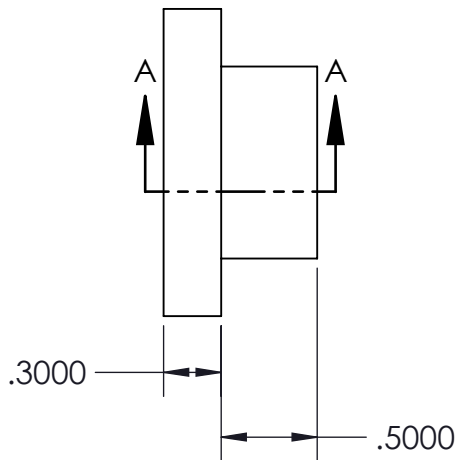
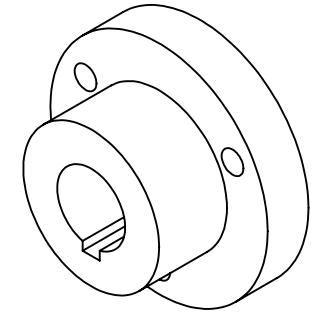
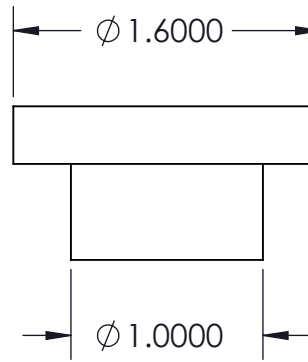
ModRooster: Automated Fatigue Testing Machine

DATE 5/4/18

SCALE 1:8



SECTION A-A



DRAWN BY Daniel McGinn

COURSE ME 93: Design for Emerging Markets

SECTION 01

Ref Designation C1

Tufts
UNIVERSITY

School of
Engineering

SHEET 1 OF 1

APPROVED N. Wright

TITLE

Aluminum Flange Mount

ModRooster: Automated Fatigue Testing Machine

DATE 4/3/18

SCALE 1:1

